

**BASE PLAN NOTES**

1. THE EXISTING CONDITIONS INFORMATION SHOWN ON THE DRAWINGS IS BASED ON THE FOLLOWING:
  - NYS GIS ORTHO IMAGERY DATED 2017
2. UTILITY LOCATIONS SHOWN WERE PLACED VIA GOOGLE EARTH IMAGERY. THE ACCURACY AND COMPLETENESS OF SUBSURFACE INFORMATION SHOWN ON THESE DRAWINGS IS NOT GUARANTEED. DETERMINE THE LOCATIONS AND ELEVATIONS OF ALL UTILITIES WHICH MAY AFFECT CONSTRUCTION OPERATIONS.
3. THE DRAWINGS ARE BASED ON THE FOLLOWING DATUMS: HORIZONTAL-NY83-EF ; VERTICAL-N/A
4. THE EXISTING CONDITIONS SHOWN ARE APPROXIMATE. FIELD VERIFY EXISTING CONDITIONS.
5. THE ROW PROPERTY LINES, EDGE OF PAVEMENT, AND ROAD CL SHOWN WERE PROVIDED BY DUTCHESS COUNTY DEPARTMENT OF PLANNING AND DEVELOPMENT. ROW DATA WAS PUBLISHED IN 2021 USING DCRPT 2020 TAX PARCEL BOUNDARY DATA. ROAD EDGE DATA WAS PUBLISHED IN 2012.

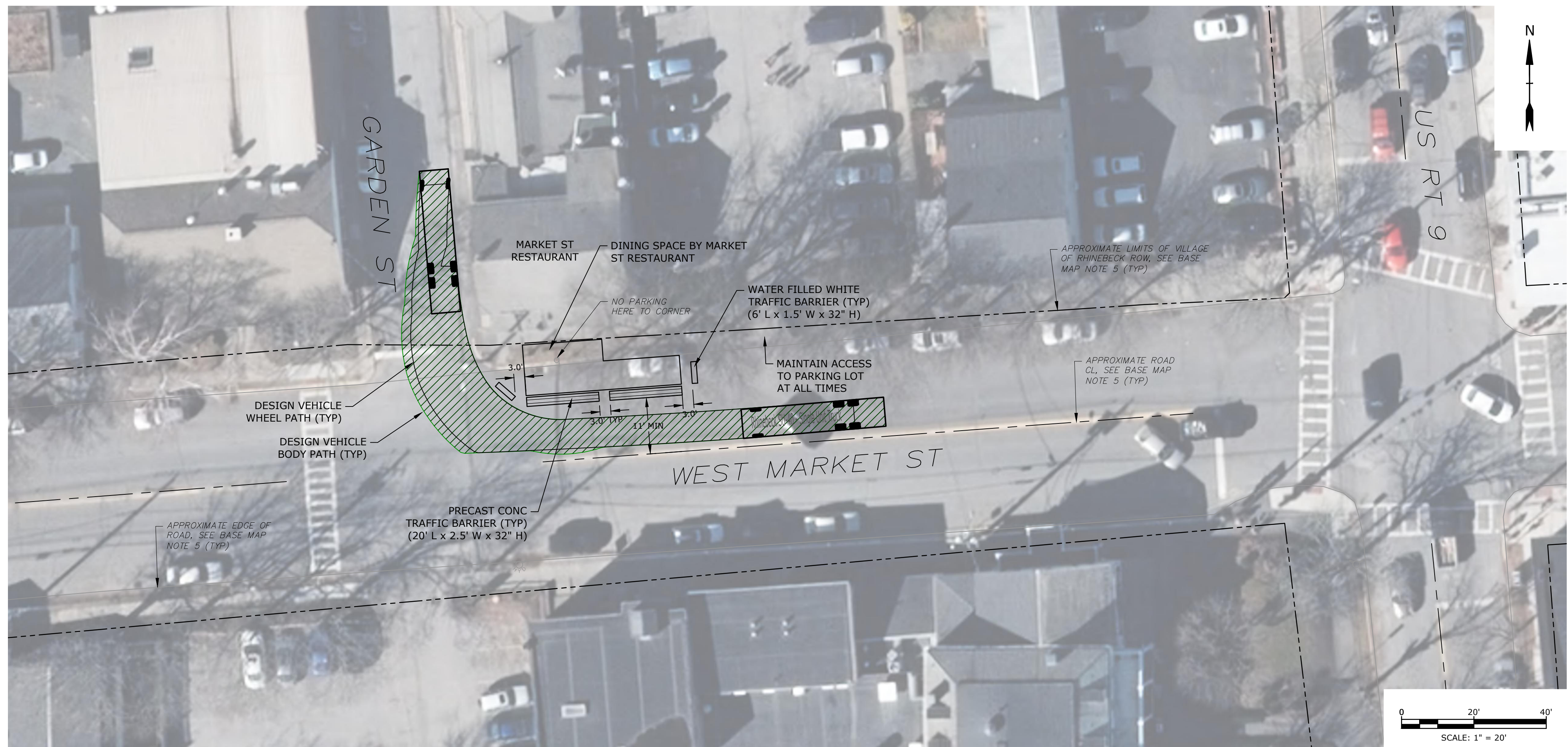
**TRAFFIC BARRIER PLACEMENT NOTES**

1. PROVIDE 3' MIN CLEARANCE BETWEEN ALL TRAFFIC BARRIERS FOR EMERGENCY ACCESS ONLY. PROVIDE CHAIN CLOSURES WHEN NOT IN USE BY EMERGENCY PERSONNEL TO DETER PEDESTRIANS FROM CROSSING STREET.
2. DO NOT BLOCK DRIVEWAYS OR PARKING LOT ACCESS WITH TRAFFIC BARRIER.
3. MAINTAIN 5' MIN CLEAR SPACE FOR PEDESTRIAN TRAFFIC WITHIN THE RIGHT OF WAY.
4. COORDINATE PLACEMENT OF BARRIERS NEAR HYDRANTS WITH VILLAGE OF RHINEBECK FIRE DEPARTMENT.

**DESIGN VEHICLE NOTES**

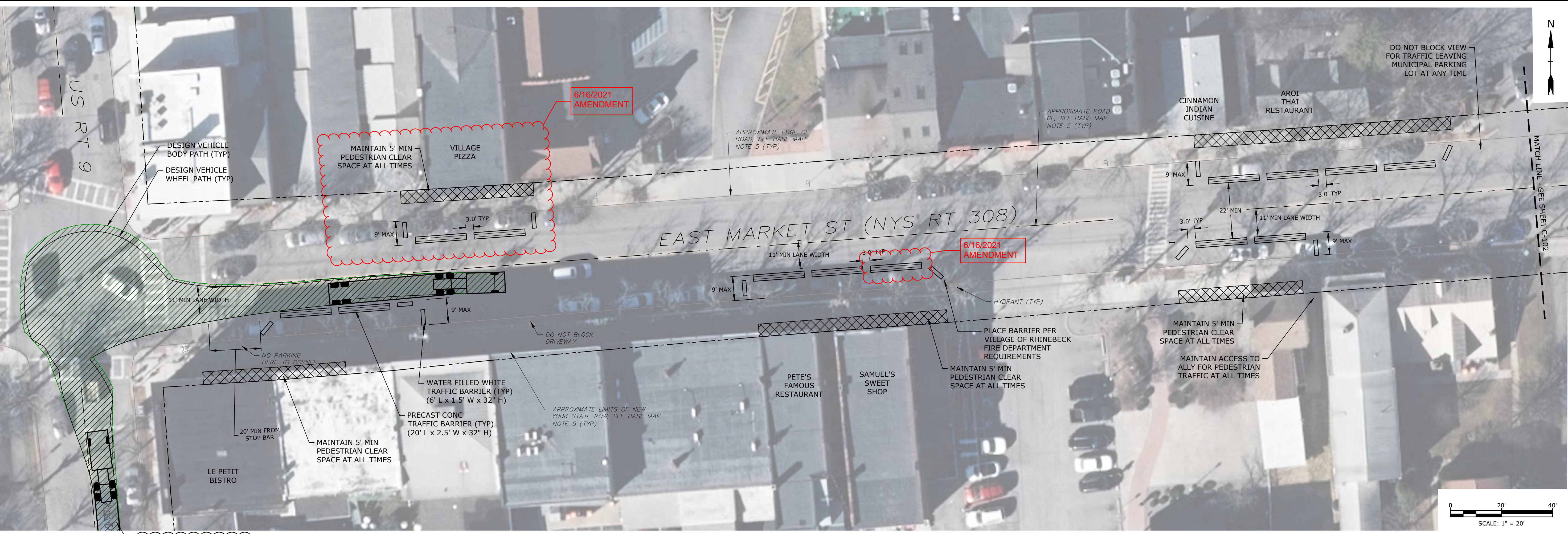
1. BASIS OF DESIGN: WB-62 (PER CONVERSATIONS WITH JOHN IAPOCE ON MAY 4, 2021).
2. EXISTING GEOMETRY OF NYS 308 / US RT 9 INTERSECTION OF THE VILLAGE OF RHINEBECK SHOWN VIA AERIAL IMAGE. VEHICLE PATH FOR THE WB-62 COMPLETING THE RIGHT HAND TURNING MOVEMENT SHOWN IS CONSISTENT WITH THE EXISTING CONDITIONS.

TRAFFIC BARRIER COUNT		
ROAD	20' CONCRETE	6' WATER FILLED
WEST MARKET ST	2	2
EAST MARKET ST	13	11
LIVINGSTON ST	2	2
TOTAL	17	15



**WEST MARKET STREET  
PLANNED ON-STREET DINING**  
SCALE: 1" = 20'

**PERMIT PLAN**



**EAST MARKET STREET (NYS RT 308)  
PLANNED ON-STREET DINING**  
SCALE: 1" = 20'

**On-Street Dining**

Village of Rhinebeck Planning Board

Rhinebeck, NY

SERVICES PROVIDED IN NEW YORK BY T&B ENGINEERING AND LANDSCAPE ARCHITECTURE, P.C. UNAUTHORIZED ALTERATIONS TO THIS DOCUMENT IS A VIOLATION OF SECTION 2005 OF THE NEW YORK STATE EDUCATION LAW.

MARK	DATE	DESCRIPTION
C	5/26/2021	REVISED BARRIER LAYOUT
B	5/3/2021	NYSDOT COMMENTS
A	4/2/2021	NYSDOT SUBMISSION

PROJECT NO: R5009-014  
DATE: 04/02/2021  
FILE: R5009-014 VillageOn-Street Parking.dwg  
DRAWN BY: RLS  
CHECKED BY: BKN/COG  
APPROVED BY: BKN

**ON-STREET PARKING  
(WEST MARKET ST / EAST MARKET ST)**  
SCALE: AS SHOWN  
**C-101**  
SHEET 1 OF 2

Last Saved: 5/26/2021 3:23pm By: BSasser  
Printed On: May 26, 2021 3:23pm  
Tighe & Bond Inc. \Projects\R5009 Village of Rhinebeck\04 Outdoor Dining\Drawings\Figures\AutoCAD\Drawings\04 VillageOn-Street Parking.dwg



**LIVINGSTON STREET  
PLANNED ON-STREET DINING**  
SCALE: 1" = 20'

**PERMIT PLAN**



**EAST MARKET STREET (NYS RT 308)  
PLANNED ON-STREET DINING**  
SCALE: 1" = 20'

**On-Street Dining**

Village of Rhinebeck Planning Board

Rhinebeck, NY

SERVICES PROVIDED IN NEW YORK BY T&B ENGINEERING AND LANDSCAPE ARCHITECTURE, P.C.  
UNAUTHORIZED ALTERATIONS TO THIS DOCUMENT IS A VIOLATION OF SECTION 2005 OF THE NEW YORK STATE EDUCATION LAW.

MARK	DATE	DESCRIPTION
C	5/26/2021	REVISED BARRIER LAYOUT
B	5/3/2021	NYS DOT COMMENTS
A	4/2/2021	NYS DOT SUBMISSION

PROJECT NO: R5009-014  
DATE: 04/02/2021  
FILE: R5009-014 VillageOn-Street Parking.dwg  
DRAWN BY: RLS  
CHECKED: BKN  
APPROVED: ---

ON-STREET PARKING (LIVINGSTON ST / EAST MARKET ST)

SCALE: AS SHOWN

**C-102**  
SHEET 2 OF 2